

3/4" EMT CONDUIT FROM  
CURRENT TRANSFORMERS  
\*\*SEE NOTE 6

↑  
TO TRANSFORMER

SCH 80 CONDUIT MUST BE USED  
ALL THE WAY UP THE POLE  
\*\*SEE NOTE 5

APPROVED WIRE SIZES PER LUS CODE	
ALUMINUM	COPPER
- #2	- #2
- 1/0	- 1/0
- 4/0	- 4/0
- 350	- 350
- 500	- 500
- 750	

DURHAM METERBASE SEE  
SHEET 2 FOR DETAILS

AT LEAST 2 CONDUIT STRAPS  
ON EACH RAIL FOR STABILITY  
OF THE METERBASE.

6' MAXIMUM  
5' MINIMUM

FINISHED GRADE

24"

36"

NOTES:

1. THE GROUND WIRE FROM THE METERBASE MUST EXIT THE BOTTOM OF THE METERBASE AND TERMINATE ON THE UTILITY GROUND WIRE LOCATED ON THE POLE.
2. THE MINIMUM DISTANCES FOUND ON ANY OF THE SHEETS ARE STILL REQUIRED TO BE FOLLOWED PER LUS CODE.
3. ALL TRANSFORMER BOLTS, FLAGS, AND CONNECTORS WILL BE SUPPLIED AND INSTALLED BY LUS.
4. SERVICE WIRE GAUGE MUST BE COMMON TO LUS CODE.
5. 3" OR 4" CONDUIT CAN BE USED FOR SERVICE DROP.  
CONDUIT STRAPS MUST MATCH THE CONDUIT DIAMETER.
6. ALL CONDUIT, EMT AND PVC, COUPLINGS, AND WEATHERHEADS MUST BE SUPPLIED BY THE CUSTOMER.
7. SEE SHEET NO. 2 FOR DETAILED VIEW

METERBASE GUIDELINES FOR CURRENT  
TRANSFORMER METERING AT THE POLE

SCALE: NOT TO SCALE

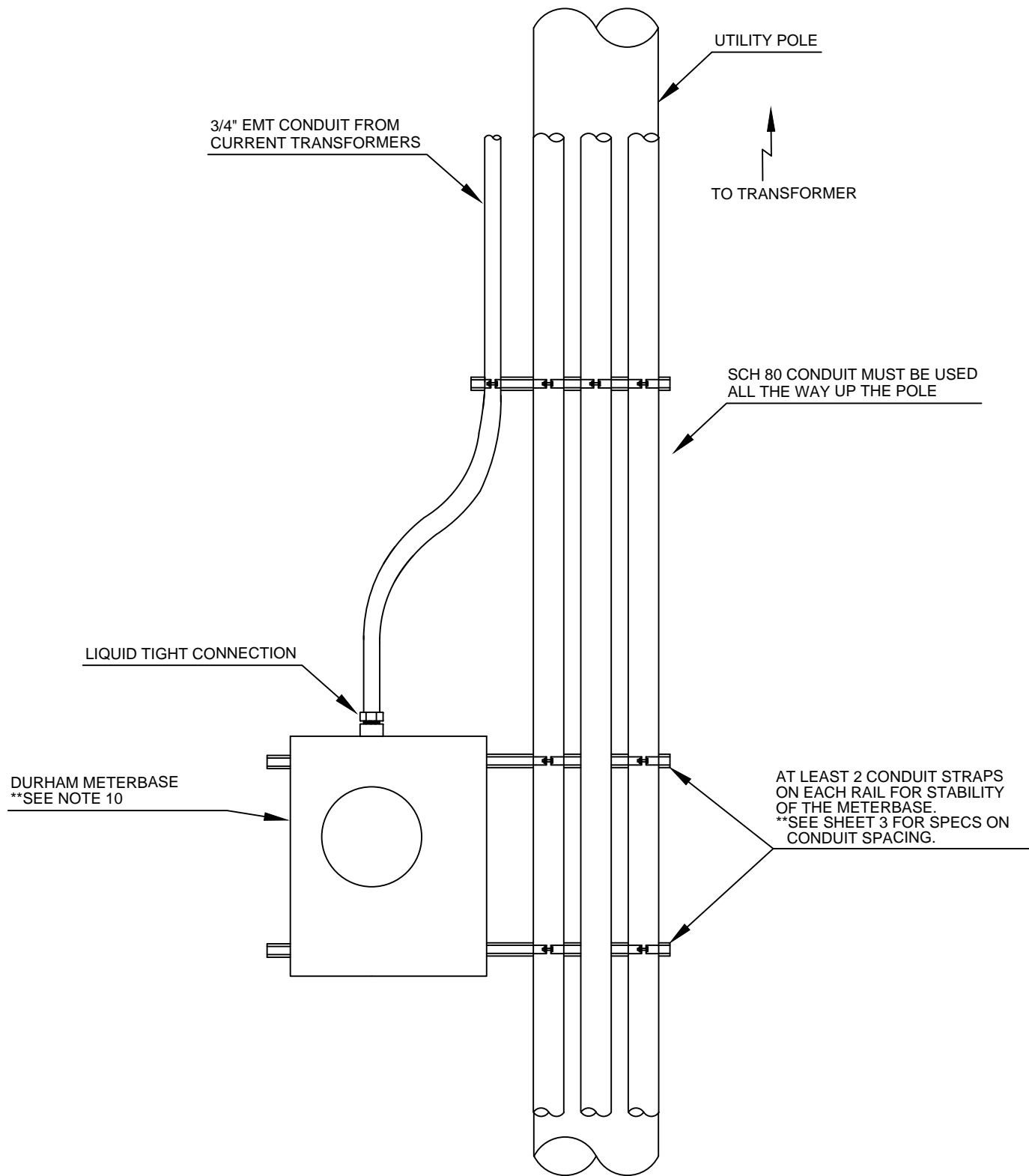
DATE: 12-13-2016

DRAWN BY: BRADY T. ALLRED

SHEET NO. 1

*LAWRENCEBURG UTILITY SYSTEMS*

1607 N LOCUST AVENUE  
LAWRENCEBURG, TN 38464  
(931) 762-7161



NOTES:

8. THE GROUND WIRE FROM THE METERBASE MUST EXIT THE BOTTOM OF THE METERBASE AND TERMINATE ON THE UTILITY GROUND WIRE LOCATED ON THE POLE.
9. THIS VIEW IS TO HAVE A CLOSER VIEW WITH MORE DETAIL. THE MINIMUM DISTANCES FOUND ON ANY OF THE SHEETS ARE STILL REQUIRED TO BE FOLLOWED PER LUS CODE.
10. THE DURHAM METERBASE MUST BE PURCHASED FROM LUS AND INSTALLED BY THE ELECTRICIAN.

**METERBASE GUIDELINES FOR CURRENT TRANSFORMER METERING AT THE POLE**

SCALE: NOT TO SCALE

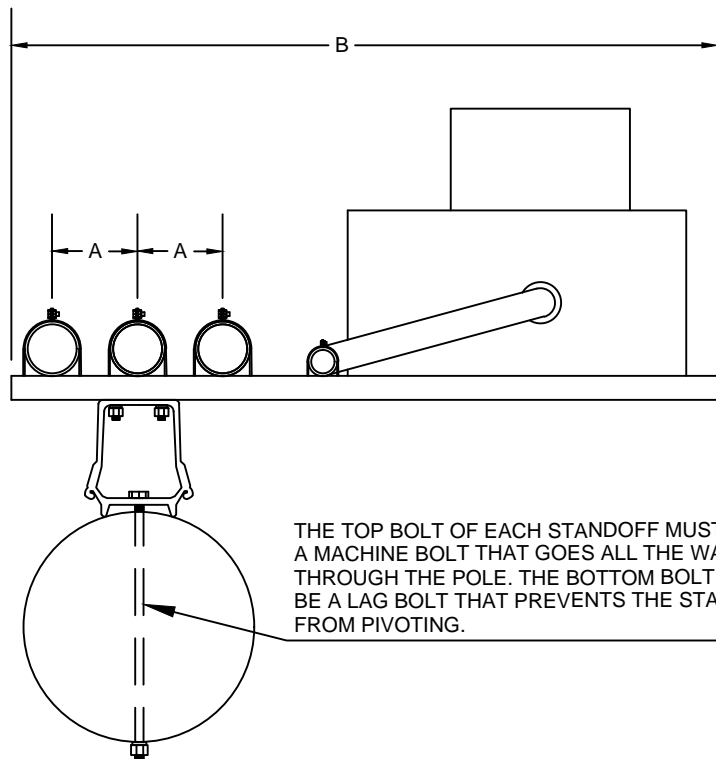
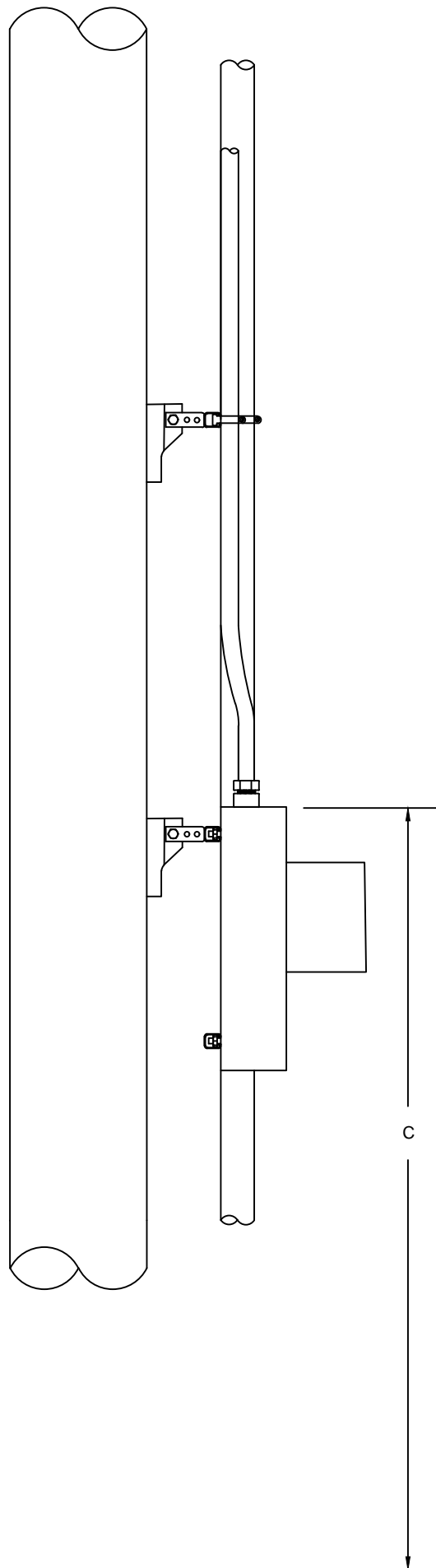
DATE: 12-13-2016

DRAWN BY: BRADY T. ALLRED

SHEET NO. 2

**LAWRENCEBURG UTILITY SYSTEMS**

1607 N LOCUST AVENUE  
LAWRENCEBURG, TN 38464  
(931) 762-7161



THE TOP BOLT OF EACH STANDOFF MUST BE A MACHINE BOLT THAT GOES ALL THE WAY THROUGH THE POLE. THE BOTTOM BOLT MUST BE A LAG BOLT THAT PREVENTS THE STANDOFF FROM PIVOTING.

NOTES:

- A. THE DISTANCE BETWEEN MIDPOINTS OF EACH RUNG OF CONDUIT.
  - 9" FOR 3" CONDUIT
  - 12" FOR 4" CONDUIT

- B. THE OVERALL LENGTH OF THE RAIL.
  - 38" FOR 3" CONDUIT
  - 46" FOR 4" CONDUIT

RAILS AND STANDOFFS WILL BE PURCHASED BY THE CUSTOMER FROM LUS.  
 C. FROM THE FINISHED GRADE TO THE TOP OF THE METERBASE MUST BE INSTALLED BY THE CUSTOMER PER SPEC SHOWN.  
 ALL CONDUIT FOR THE CURRENT TRANSFORMER IS TO BE SUPPLIED BY THE CUSTOMER BUT WILL BE INSTALLED BY LUS.

## METERBASE GUIDELINES FOR CURRENT TRANSFORMER METERING AT THE POLE

SCALE: NOT TO SCALE

DATE: 12-13-2016

DRAWN BY: BRADY T. ALLRED

SHEET NO. 3

*LAWRENCEBURG UTILITY SYSTEMS*

1607 N LOCUST AVENUE  
 LAWRENCEBURG, TN 38464  
 (931) 762-7161