

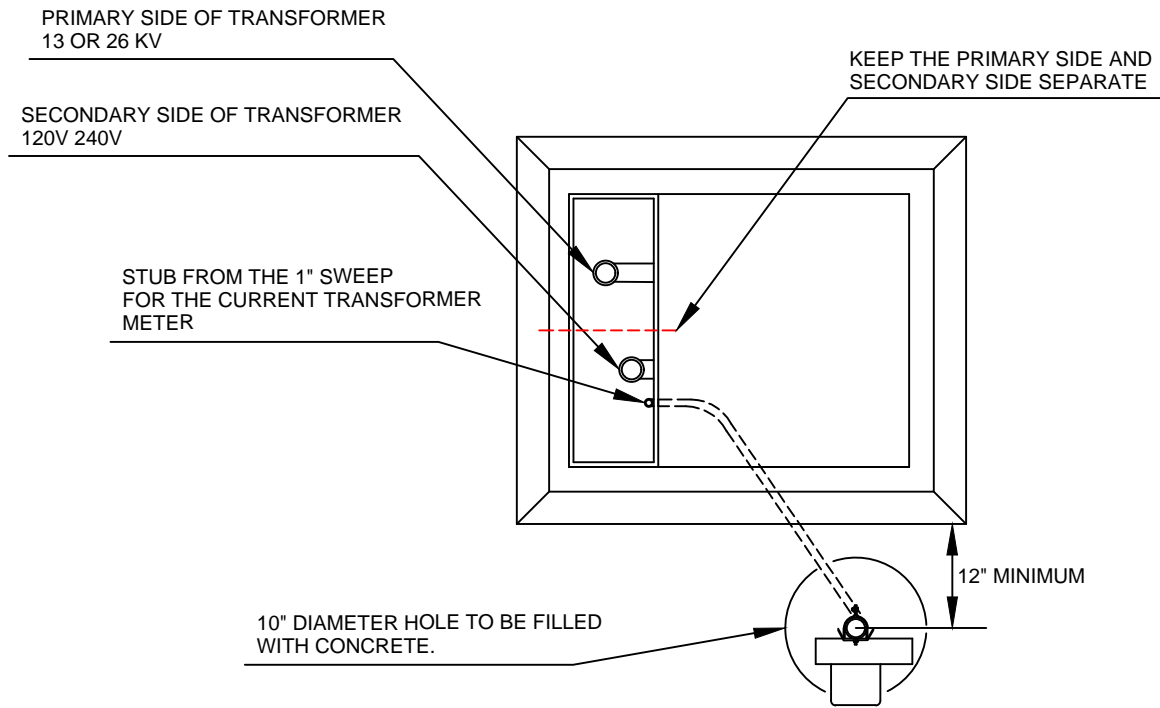
 NOTE: THE RIGID CONDUIT MUST BE SETTLED 2' IN UNDISTURBED EARTH WITH A MINIMUM OF 5' BELOW FINISHED GRADE. CONCRETE MUST FILL HOLE IN PLACE OF BACKFILL. THE CONCRETE MUST BE POURED BEFORE ANY BACKFILL IS PLACED IN THE DITCH. ONCE THE CONCRETE IS SET, AN LUS ENGINEER MUST COME INSPECT. FOLLOWING THE ENGINEER'S APPROVAL BACKFILL IS TO BE PLACED IN THE DITCH. ALL RIGID CONDUIT ABOVE GROUND MUST BE CAPPED

**VAULT TYPE TRANSFORMER PAD FOR
 CURRENT TRANSFORMER METERING**

SCALE: NOT TO SCALE	DATE: 6-5-15	VIEW: SIDE
DRAWN BY: BRADY T. ALLRED		SHEET NO. 1

LAWRENCEBURG UTILITY SYSTEMS
 1607 N LOCUST AVENUE
 LAWRENCEBURG, TN 38464
 (931) 762-7161

← TO STREET



VAULT TYPE TRANSFORMER PAD FOR CURRENT TRANSFORMER METERING

SCALE: NOT TO SCALE

DATE: 6-5-15

VIEW: TOP

DRAWN BY: BRADY T. ALLRED

SHEET NO. 2

LAWRENCEBURG UTILITY SYSTEMS

1607 N LOCUST AVENUE
LAWRENCEBURG, TN 38464
(931) 762-7161